



Steel Rack

Suzuki DRZ 400 S/SM

GPT.05.827.20001

PLEASE READ BEFORE INSTALLING

SW-MOTEC products should be installed by a qualified, experienced motorcycle technician. If you are unsure of your ability to properly install a product, please have the product installed by your local motorcycle dealer. SW-MOTEC takes no responsibility for damages caused by improper installation.

All screws, bolts, and nuts, including all replacement hardware provided by SW-MOTEC should be tightened to the torque specified in the OEM maintenance manual for your motorcycle. If no torque specifications are provided in the OEM maintenance manual, the following torques may be used:

M5.....	3.5 ft-lbs (5 Nm)
M6.....	7 ft-lbs (9.6 Nm)
M8.....	13 ft-lbs (18 Nm)

All screws, bolts, and nuts should be checked after driving the first 30 miles (50 km) to ensure that all are tightened to the proper torque.

Medium strength liquid thread-locker (i.e., "Locktite") should be used to secure all screws, bolts, and nuts.

SW-MOTEC GmbH & Co. KG

Ernteweg 7-10
35282 Rauschenberg
Germany

Tel. / phone + 49 (0)6425 / 8168 - 050
Fax / fax + 49 (0)6425 / 8168 - 10

info@sw-motech.com
www.sw-motech.com



Installation Instructions

Step 1

1

Steel Rack



GPT.05.827.020

Qty.....1

2

Countersunk Screw



M6x70.....DIN 7991

Qty.....2

3

Finish Washer



SE.00.064.02

Qty.....2

4

Spacer



OD 20, ID 6.4, H 45

Qty.....2

Step 2

5

Countersunk Screw



M6x40.....DIN 7991

Qty.....2

6

Spacer



OD 18, ID 8.4, H 18

Qty.....2

7

Lock Nut



M6.....DIN 6927

Qty.....2

Extra

For use with side carriers

8

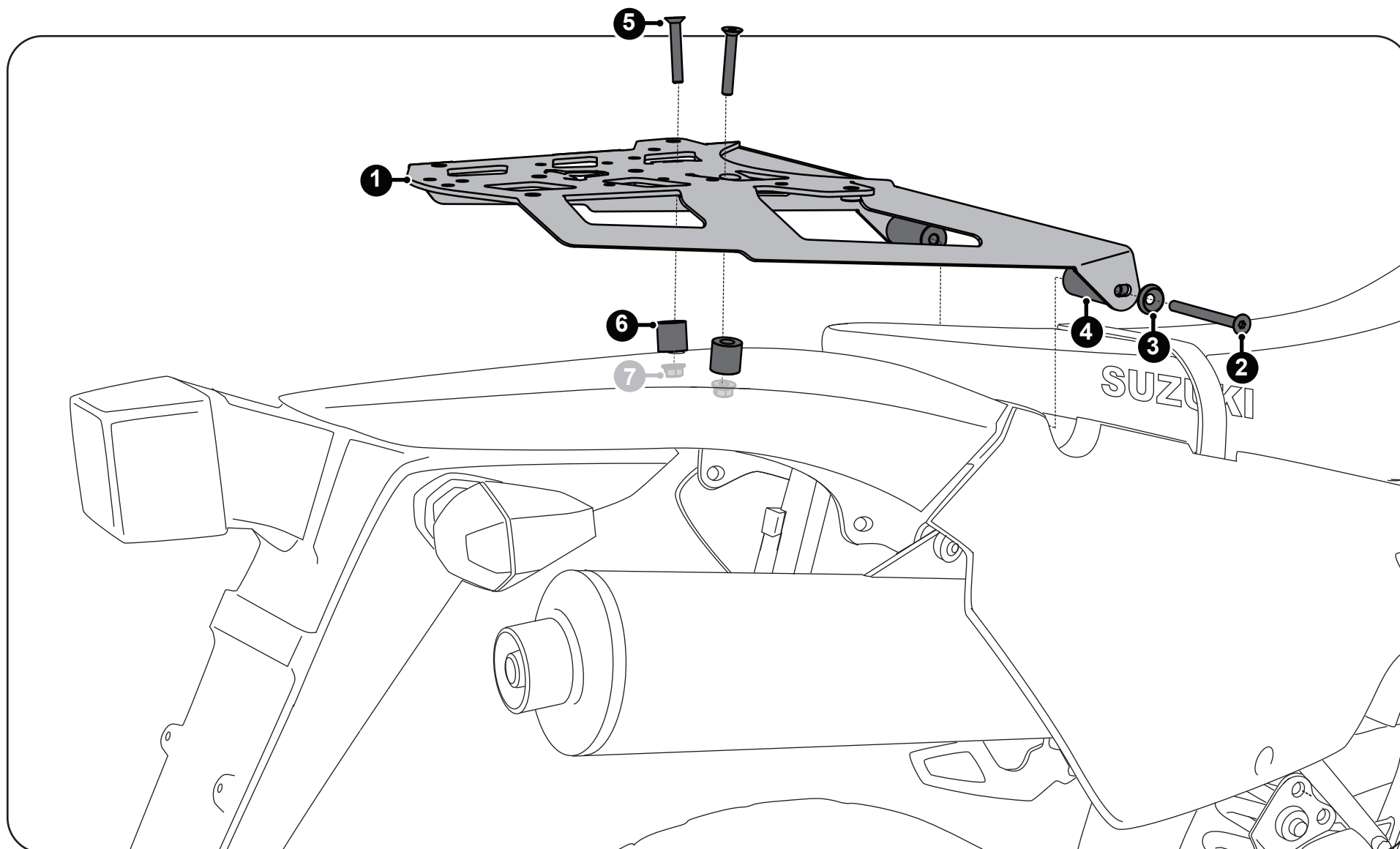
Countersunk Screw



M6x50.....DIN 7991

Qty.....2

Installation Instructions



Step One: Remove the OEM tail bag and rear seat bolts. Loosley mount the front of the Steel Rack to the rear seat mounting points on your bike.

Step Two: Fasten the rear mounting points to the bike, then fully tighten all fasteners to the proper torque spec. To mount this Steel Rack with the SW MOTECH Side Carriers replace screw #5 with the longer M6x50 countersunk screws provided.